

NEW

SUMOMAX

EXPAND IN ANY DIRECTION

700W POWER

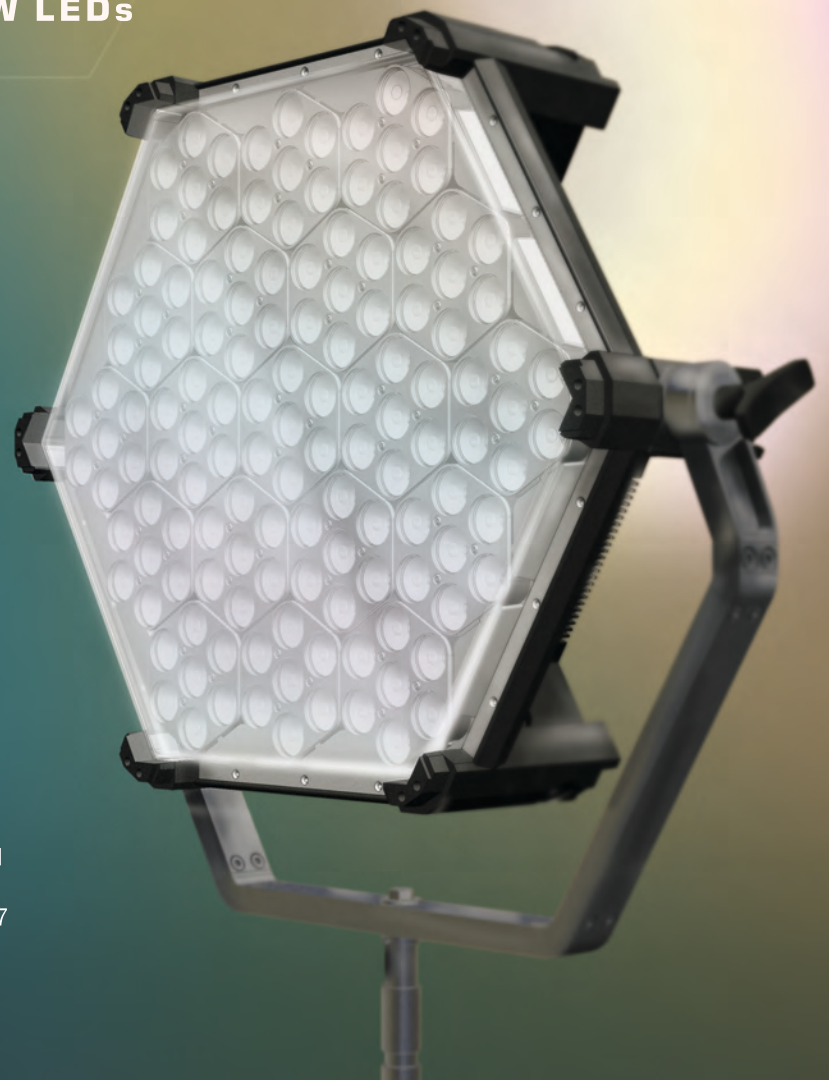
LIGHTWEIGHT & SILENT

19 PIXEL – VFX READY

1900FC/ 20500LX @ 3M/9.8' ILLUMINANCE

INTERCHANGEABLE BEAM ANGLE
WITH 20° NATIVE BEAM ANGLE

RGBWW LEDs



SUMOLIGHT
MADE IN GERMANY



SUMOLIGHT.COM
INFO@SUMOLIGHT.COM

SUMOLIGHT USA, INC
LOS ANGELES
+1 310 729 5339

SUMOLIGHT UK LTD.
LONDON
+44 7877 726649

SUMOLIGHT GMBH
BERLIN
+49 30 3389 2987

Features

Full Spectrum **R G B W W** Hard to Soft Light
IP65
Pixel mapping **19 pixel**
Full **SUMOSKY** and Unreal Engine integration
Modular

Same Form Factor as the **SUMOSPACE+** with higher output
Passively cooled
Interchangeable Beam Angles
Flicker Free

System Specifications

GENERAL

Mounting	SUMOSNAP Quick Release, Clamp and Junior Pin Adapters. Yoke Mount
Ambient Temperature	40°C
Cooling	Passive
Weight	13kg/ 29lbs without Mounts
Dimensions	561 x 500 x 175mm/ 22.1 x 19.7 x 6.9in
Protection class	IP65

OPTICAL

Light sources	RGBWW LEDs
CRI; TLCI	>95; >95
Beam angle	18° native and 20°, 30°, 40°, 60°, 90° and 120° with Interchangeable Optics
Photometrics / Illuminance	1m: 110 000lx/ 10 220fc, 3m: 20 500lx/ 1 900fc, 5m: 7 800lx/ 725fc
Colour Temperature Range	1800K to 15000K

ELECTRICAL

Power	700W
Dimming	0-100% with Super Smooth Dimming in Standard Mode
Input (AC)	100-240V AC, 50/60Hz, Max 3A @240V /Max 7A @100V
Input (DC)	48V, Max. 13A

CONTROL INTERFACE

User interface	Touch Display
Control Protocol	Art-Net, DMX/RDM, CRMX/Lumenradio, sACN, 8 and 16bit
DMX/Art-Net Personalities	12 personalities (RGBWW8, RGBWW16, CCTHSL8, CCTHSL16,...)

BUILT IN EFFECTS

Shutter/Strobe	0 to 30 Hz
Built-in Automated Programs	Yes

CONNECTIONS

Power Input	AC: Neutrik PowerConTrue1 TOP, DC: Neutrik NC3MDX-TOP
Data Connectors	LAN: RJ45, DMX: Neutrik NC5MDX-TOP & NC5FDX-TOP

ACCESSORIES - COMPATIBLE WITH SUMOSPACE+

Interchangeable Lenses	
Plate Diffusers	
Beautybank, Softgrid, Space Light Skirts, Classic Skirts, Cover; SoftDome Lantern.	